

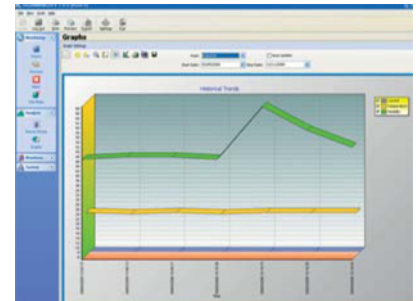
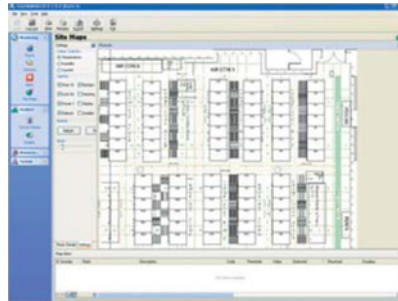
*IntelliServer is the central software engine of an IntelliSystem. It is built on a well-proven, ultra robust database engine. Like all IntelliData software, IntelliServer is completely developed inhouse, requiring no third party licence fee and allowing IntelliData Systems to react quickly in modifying the software to specific client requirements.*

*Most users are unaware of the presence of IntelliServer at the heart of the system as the IntelliManager application provides a user-friendly graphical interface that hides its sophistication.*

*However, Power Users are easily able to engineer their own user-interface solutions, or integrate IntelliServer with 3rd party front-ends using the support tools built into IntelliServer.*

### Features

- ▶ Gathers and logs data from multiple IntelliPollers on the data floor
- ▶ Integrates power, environmental and security monitoring
- ▶ Supplies data to IntelliManager clients throughout the enterprise
- ▶ Generates user-specified alerts via SNMP, e-mail, SMS & client pop-ups
- ▶ Generates scheduled and ad-hoc reports in xls format
- ▶ Customer definable reports
- ▶ Exports data via ODBC and SOAP to third party clients
- ▶ Communicates with clients via secure, encrypted links
- ▶ Maintains a registry of individual user's rights (eg power cycle rights)
- ▶ Operates in tandem with optional back-up server
- ▶ Traps, timestamps and logs every event
- ▶ Efficiently records system history, minimising disc usage
- ▶ Supplied complete with management and maintenance tools





#### Global view

The IntelliData Systems architecture allows users to see as much of the global picture as they need to. The database filters allow a manager in London to see the state of every cabinet in every data centre in every region, or just the European ones, or just those with HAL blade servers. The system can be engineered so that monitoring and control is passed from time zone to time zone, following the sun.

#### System Requirements

IntelliServer will run on any machine (or virtual machine) with a Windows® operating system, a 1GHz processor, 1Gbyte RAM, 30 Gbyte hard drive, or better.